

FROM THE GENERAL MANAGER/CEO

Annual meeting notice

New Enterprise Rural Electric Cooperative, Inc.

A Touchstone Energy® Cooperative 



New Enterprise REC
One of 14 electric cooperatives serving Pennsylvania and New Jersey

3596 Brumbaugh Road
P.O. Box 75
New Enterprise, PA 16664-0075
814/766-3221 • 1-800-270-3177
FAX 814/766-3319
Website:
www.newenterpriserec.com

BOARD OF DIRECTORS

Leroy D. Walls, President
David Bequeath, Vice President
John R. Dively, Secretary
Robert Guyer, Asst. Secretary
Dean Brant, Treasurer
Timothy Newman
Ellis Sollenberger

OFFICE HOURS

Monday through Friday
7 a.m. - 3:30 p.m.

EMERGENCY OUTAGE NUMBER

814/766-3221
1-800-270-3177



Rick L. Eichelberger
General Manager & CEO

MARK YOUR calendars now for the 76th annual meeting of the members of New Enterprise Rural Electric Cooperative, Inc. This year's meeting will be held at the Northern Bedford County High School, Loysburg, on Tuesday, June 17, 2014. Attend this year's meeting and join others in:

- ▶ A family-style turkey dinner from 4:30 to 7 p.m.
- ▶ Bluegrass music by "Revised Edition."
- ▶ Children's entertainment during the business meeting will be provided by Dennie Huber, magician and balloon artist, from 6:30 to 8 p.m.
- ▶ Business meeting from 7 to 8 p.m.
 - Reports given by officers and general manager/CEO.
 - Election of three directors to serve the cooperative for a three-year term.
 - Transaction of business properly brought before the meeting.

Official annual meeting notices and registration cards will be mailed out in late May. Only consumer-members are eligible to vote at the annual meeting (consumer-members are those who have paid a \$5 membership fee). If you are unsure if you have paid your membership fee, please contact the office for verification.

The Northern Bedford County High School Band students and parents will serve the meal. All members of the household are encouraged to attend. Two free adult and two free children's meal tickets for those living in the same household will be provided for each membership present. In addition, one free guest ticket for someone living outside the household will be allowed. Additional tickets are \$9.50 for adults and \$4.50 for ages 12 and under. Reservations must be made by June 3.

If you have paid a membership fee and have not received an official annual meeting notice and reservation card in the mail before the end of May, please call the office. ☀



FAMILY-STYLE: New Enterprise Rural Electric Cooperative members enjoy a family-style turkey dinner before the annual meeting.

The power of membership

BY BRAWNA SELL

NOW, as always, it's a good time to be a member of an electric cooperative.

Not only are co-ops locally owned and controlled — by you, our members — they are locally run to serve your needs.

While many Pennsylvania electricity consumers pay power bills to companies that answer to far-away stockholders who demand a healthy profit every quarter, local members call the shots at electric co-ops like ours. Co-ops aren't under pressure to keep rates high enough to generate big profits. Instead, co-ops try to keep your bill as low as possible while providing high-quality service. Co-ops invest money in excess of operating costs back into the business locally or return the excess (known as margins) to you in the form of capital credits.

And unlike the boards of directors of investor-owned utilities who keep an eye on generating profits for people living far away, your co-op's directors (fellow members, by the way) have only one thing in mind: keeping lights on safely and reliably, and keeping costs affordable in our local community. That's why you elected them.



DEMOCRATIC MEMBER CONTROL: Members cast their vote for the directors who will serve for the next three years.

And that's what's so great about co-ops.

You may know the history of the electric cooperative movement — how seven decades ago, rural residents banded together to bring the conveniences of electricity to their communities when investor-owned utilities would not extend service. The associations they formed on the same democratic principles as this great nation are as strong and relevant today as they were back then.

But co-ops are not just products of a proud past. These days, Americans from all walks of life have come to recognize the co-op approach — members working together to achieve price and service benefits — can work for other needs just as effectively as it delivered affordable power to rural Americans.

The seven principles upon which electric co-ops were founded — voluntary and open membership, democratic member control and members' economic participation, among others — are as meaningful today as they were when electric co-ops began in the 1930s.

Leadership at New Enterprise Rural Electric Cooperative shares the same concerns as you, our members. We are accessible. You can give us a call or send us an email and know someone here is listening. And at our annual meeting on June 17, 2014, visit with us in person and share insights on how you want your business operated.

In these days of economic turmoil, folks who receive electricity from co-ops are lucky. As locally owned and operated businesses, electric co-ops understand the people they serve. Directors and employees at your co-op share the same values and have the same pride of place as you do because it is our community, too. We act like neighbors because we are neighbors.

That's the cooperative difference. 

Attention landlords

Be sure when renting your properties that you have the renter(s) put the account into his or her name. By putting the account in the renter's name, you as a landlord aren't responsible for any unpaid bills.

A credit check is run on any new member opening an account in their name. The credit check determines what deposit will need to be paid. If a person has an excellent credit rating, no deposit is required. An average credit rating needs a \$125 deposit. A \$250 security deposit is required for individuals with below-average credit. Should a person have no credit history, they will need to pay a \$125 security deposit. Occasionally, a person has a write-off amount with the cooperative. In this case, the prior balance, membership and deposit need to be paid before an account can be changed into their names.

In addition to a security deposit, a \$5 membership fee is required, plus membership papers.

The security deposit is returned to the member on their billing statement after 12 months of consecutive payments in full. Should there not be these 12 payments, the deposit is refunded on the final billing.

If a renter moves into a property and the account remains in the landlord's name, we are unable to disconnect the account until the renter moves or the account is subject to disconnection for non-payment.

So remember, be sure your renter takes care of their entire obligation with the co-op before you give them the keys. If you like, call us to be sure everything is taken care of.

What are tamper-resistant receptacles (TRRs)?

They may look like standard outlets, but tamper-resistant receptacles, or TRRs, are different. Their most distinguishing feature — a built-in shutter system that prevents foreign objects from being inserted — sets them apart. Only a plug that applies simultaneous, equal pressure to both slots will disengage the cover plates, allowing access to the contact points. Without this synchronized pressure, the cover plates remain closed.

While a child's curiosity knows no boundaries, it can sometimes put them in peril, especially when electricity is involved. Located in practically every room of the house, electrical outlets and receptacles are fixtures, but they also represent potential hazards for children.

In recent years, more homes have been equipping their electrical outlets with TRRs, but in many public facilities, like hospital pediatric wards, these safeguards have been required for more than 20 years. Their efficiency also

prompted the National Electrical Code to make TRRs standard in all new home construction. Existing homes can be easily retrofitted with TRRs using the same installation guidelines that apply to standard receptacles. TRRs should only be installed by a licensed electrician and should carry a label from a nationally recognized, independent testing lab such as UL, ETL, or CSA.

TRRs by the numbers

- ▶ Each year, 2,400 children suffer severe shock and burns resulting from inserting objects into the slots of electrical receptacles. That's nearly seven children a day.
- ▶ It is estimated that six to 12 child fatalities result from children tampering with electrical receptacles annually.
- ▶ Installing a TRR in a newly constructed home is only about 50 cents more than a traditional receptacle.
- ▶ Existing homes can be retrofitted with TRRs for as little as \$2 per outlet. ⚡

Wake up to safety in the bedroom

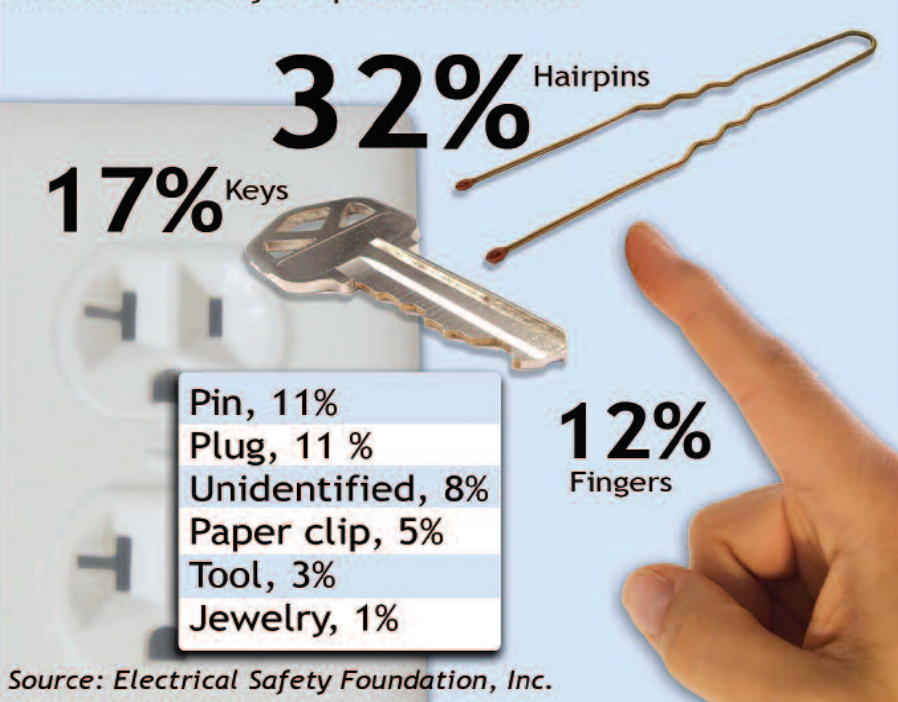
The average adult sleeps almost eight hours per night, spending at least one-third of every day in their bedroom. Unfortunately, we are often at our most vulnerable while asleep. Thirty-six percent of people killed in home fires never wake up. Take steps to make sure your bedroom is safe — you'll sleep better!

SAFETY TIPS:

- ▶ Before installing a portable air conditioner, make sure that the electrical circuit and the outlet are able to handle the load.
- ▶ Large window air-conditioning units should have their own separate electrical circuit so the system is not overloaded.
- ▶ Air conditioners need to be cleaned at the beginning of every season to keep them running safely and efficiently.
- ▶ Check ceiling fans regularly for a wobble, which will wear out the motor over time. To fix the wobble, turn off power to the ceiling fan, and tighten the screws.
- ▶ Replace any lamp whose cord is damaged or cracked.
- ▶ Use correct bulb wattage in fixtures. Lightbulbs with wattages that are too high for the light fixture can overheat the fixture and start a fire.
- ▶ Always turn lamps off when you leave the room for an extended period of time.
- ▶ If you have a rechargeable battery, be sure to use the proper battery charger intended for the size and type of battery you have.
- ▶ Unplug battery chargers or power adapters when equipment is fully charged or is disconnected from the charger.

Objects Commonly Placed in Electrical Outlets

Every year 2,400 children are injured after inserting household objects into electrical outlets. These are the most common objects placed in outlets:



Co-op Connection Cards smartphone app

Now Co-op Connections is with you wherever you may roam. Download our free smartphone app that puts a digit card, GPS-based deal finder and more tools right at your fingertips. This is now available in the Google Play and iTunes stores — search “Co-op Connections.”

KIDZCORNER

Stay safe with electricity

Electricity has many good qualities. It helps us live our daily lives so much easier. It gives us lights, hot water, music, clean clothes, plus many more things. With all the good electricity provides us, it can also be very dangerous.

Here are a few things to be careful with:

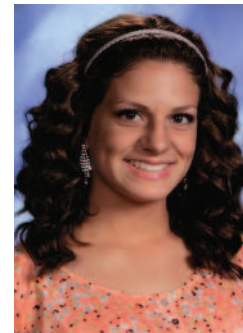
- ➔ NEVER stick your finger or other objects into electric sockets.
- ➔ NEVER play video games in the bathtub.
- ➔ NEVER carry your toys by the cord.
- ➔ NEVER fly your kite near power lines or in the rain.
- ➔ NEVER handle plugs or switches when your hands are wet.
- ➔ NEVER pull a plug from an outlet by the cord.
- ➔ NEVER climb a tree that is near a power line.
- ➔ NEVER enter areas marked "DANGER" or "HIGH VOLTAGE."



2014 Youth Tour student

We are pleased to announce the 2014 Youth Tour student is Connor Reasy. Connor Reasy is the daughter of Chris and Tammy Reasy of New Enterprise. She is a junior at Northern Bedford County High School. Her future career plans are to become a secretary.

While in school, Connor has partici-



Connor Reasy

ipated in soccer, band, chorus, track, Student Council and Future Business Leaders of America (FBLA). She has volunteered at blood drives, performed in the musical, "Lil Abner,"

plus many other activities.

Connor belongs to the Koontz Church of the Brethren's youth group. She also volunteers at the church as the church secretary. One of Connor's teachers describes Connor as dependable, reliable, trustworthy and an all-around great student. A family friend has good things to say about Connor, also. He states "She is a bright, caring and courteous young lady." ⚡



May co-op calendar

MAY 26 - The office will be closed in observance of Memorial Day

MAY 28 - Disconnect accounts with past due balances (call Brawna at extension 4602 no later than May 23 to make payment arrangements)

MAY 28 - Regular payments are due