

# New Enterprise Rural Electric Cooperative, Inc.

A Touchstone Energy® Cooperative 



One of 14 electric cooperatives  
serving Pennsylvania and New Jersey

3596 Brumbaugh Road  
New Enterprise, PA 16664-8814  
814-766-3221 • 1-800-270-3177

FAX: 814-766-3319

Website: [www.newenterpriserec.com](http://www.newenterpriserec.com)

## BOARD OF DIRECTORS

**Leroy D. Walls**  
**President**

**Timothy Newman**  
**Vice President**

**David Bequeath**  
**Secretary**

**Merle Helsel**  
**Asst. Secretary**

**Curtis Brant**  
**Treasurer**

**Robert Guyer**  
**Mark Swope**

**Office Hours**  
Monday through Friday  
7 a.m. - 3:30 p.m.

**Emergency Outage Number**  
814-766-3221  
1-800-270-3177

## From the General Manager/CEO



## Cooperative update

By Mark Morrison

**I THINK** we all can agree these are unusual times and our lives have all been changed due to the COVID-19 pandemic. So many of our daily routines we took for granted as a free society have been interrupted beyond what many of us have ever seen before. The restrictions and precautions imposed by the Centers for Disease Control and Prevention (CDC) and other government agencies have impacted our way of doing business at the cooperative as well.

The first change we went through at the office was limiting public and outside vendor access to the lobby. At first, this was a difficult decision. For the past 80-some years, our lobby has been open to serve the membership, but as time went on, and other businesses and cooperatives followed in step, it made sense to close the lobby for the protection of the public, employees, and staff.

The next measure also affected our cooperative family within the walls of the main office. We have taken measures to keep inside and outside workers separated. This was especially difficult from my perspective because open communication is very important to me. I try to keep employees in the loop, even if the topic is not perceived as relevant to everyone. We have had

to become more creative with things like employee meetings, safety training and daily work coordination.

Also, due to social distancing and public gathering mandates, the board was forced to make the difficult decision to postpone our annual meeting this year. I will be sending a mailing to each of you soon, addressing some of the accomplishments, construction projects and financial reports of the cooperative through 2019, as well as projects that are on the horizon.

While these times are trying and difficult, we have found some things we are doing well, as well as areas where we can improve to better serve the membership. We have also had the opportunity to examine areas like business continuity plans, disaster recovery plans, and safety procedures, and we have enhanced security measures during this time. These experiences have made us better. We will continue to follow mandates from the CDC and other government entities until the potential threat of the pandemic has subsided. There is no doubt this has been a learning experience for all. Your cooperative is always available 24/7, ready to serve the membership. Stay safe out there and, as always, feel free to give us a call and let us know how we are doing.

*Mark*

**New Enterprise Rural Electric Cooperative, Inc.  
Income Statements ending December 31, 2019**

Operating Revenue and Patronage Capital	6,312,815	6,272,466
Cost of Purchased Power	3,354,464	3,417,982
Distribution Expense - Operation	1,873,832	1,638,879
Distribution Expense - Maintenance	422,498	515,394
Customer Accounts Expense	3,721	6,005
Customer Service and Informational Expense	18,945	19,735
Sales Expense	12,442	14,418
Administrative and General Expense	329,170	312,666
<b>Total Operation &amp; Maintenance Expense</b>	<b>\$6,015,072</b>	<b>\$5,925,078</b>
Depreciation & Amortization Expense	177,932	178,437
Tax Expense - Property & Gross Receipts	8,081	8,198
Interest on Long-Term Debt	7,358	8,707
Other Deductions	66,398	61,932
<b>Total Cost of Electric Service</b>	<b>\$6,274,842</b>	<b>\$6,182,352</b>
Patronage Capital & Operating Margins	37,974	90,115
Non-Operating Margins - Interest	17,972	9,836
Non-Operating Margins - Other	191,141	144,641
Generation and Transmission Capital Credits	46,469	42,099
Other Capital Credits and Patronage Dividends	4,064	6,754
<b>Operating - Margin</b>	<b>\$297,619</b>	<b>\$293,444</b>

**New Enterprise Rural Electric Cooperative, Inc.**  
**Balance Sheets ending December 31, 2019**

**ASSETS AND OTHER DEBITS**

Total Utility Plant in Service	6,962,642	6,711,683
Accumulated Depreciation	5,321,661	5,143,729
<b>Net Utility Plant</b>	<b>\$1,640,981</b>	<b>\$1,567,954</b>
Cash - General Funds	208,344	188,132
Temporary Investments	580,336	578,135
Accounts Receivable - Sales of Energy	787,475	606,340
Accounts Receivable - Other	1,753	-196
Material and Supplies - Electric & Other	298,435	302,939
Other Current and Accrued Assets	35,608	22,177
Total Current and Accrued Assets	1,911,951	1,697,526
Other Deferred Debits	136,935	182,580
<b>Total Assets and Other Debits</b>	<b>\$3,689,867</b>	<b>\$3,448,060</b>

**LIABILITIES AND OTHER CREDITS**

Memberships	14,565	14,440
Patronage Capital	3,014,080	2,915,413
<b>Total Margins &amp; Equities</b>	<b>\$3,028,645</b>	<b>\$2,929,853</b>
Accounts Payable	661,222	674,962
<b>Total Liabilities &amp; Other Credits</b>	<b>\$3,689,867</b>	<b>\$3,604,815</b>

# Doing the ‘Electric Shift’

IT’S THE “Electric Shift” time again. As we have done in the past, we are again asking for your help in keeping power costs as low as possible.

Many of you are familiar with the phrase Electric Shift. But for those of you who aren’t, the Electric Shift is easy and, with a little practice, allows you to use electricity more wisely. During hot, humid days of summer, electric use tends to run extremely high. This makes the cost of generation to meet this need also high. Our future power costs, in fact, are partially based on how much power we buy on hot, sticky weekdays between the hours of 1 and 6 p.m. This time period is referred to as the “High Five” hours.

How can you help? Below are a few steps you can take to help prevent future power costs from increasing:

- ▶ Set your air conditioners to 78 degrees or use fans instead.
- ▶ Close your curtains and blinds to keep things cooler inside your home.
- ▶ Operate washers, dryers, dishwashers, showers, and other major appliances early in the morning or late in the evening.
- ▶ Minimize the number of times you must open your refrigerator or freezer.
- ▶ Cook with an outdoor grill or a microwave.
- ▶ Turn off any non-essential lights.

- ▶ Run pool pumps at night. We need the involvement of many people to control power costs. As we work together, we can make a difference.

So remember, from June 1 to Sept. 30, do the Electric Shift from 1 to 6 p.m. on hot, humid days. Your help is greatly appreciated. ☀

## Payment agreements

**COVID-19 has put a stress on many families’ finances. If you are having trouble paying your electric bill, please give Brawna a call at 814-766-4602 or 800-270-3177, extension 4602.**

# Reporting an outage

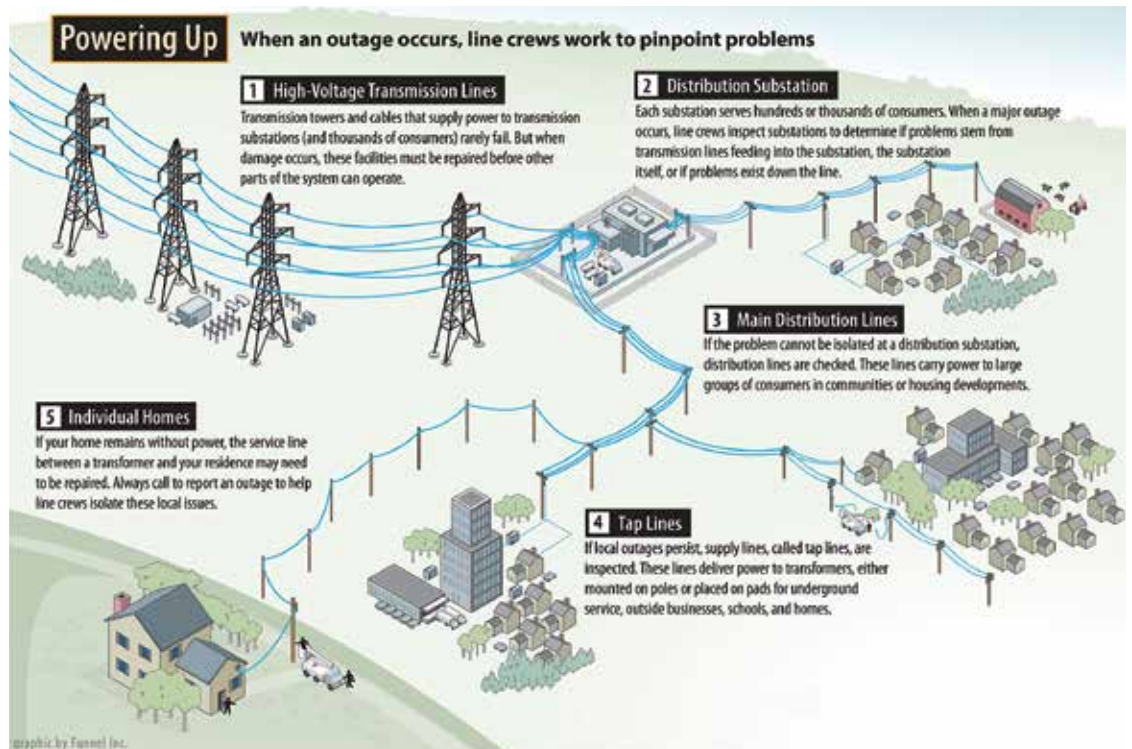
- ▶ Check your fuses or circuit breakers or check with your neighbors to see if they have power.
- ▶ Call the cooperative 24/7 at 814-766-3221 or toll-free at 1-800-270-3177.
- ▶ Listen to the menu or Press 1 at any time to report an outage.
- ▶ Listen to the message carefully for instructions.
- ▶ If an employee answers, you can discuss your outage directly with them. Otherwise, you will be directed to leave a voicemail regarding your outage.

call you back if we have additional questions.

- ▶ Be patient. If the outage occurs during a storm, many people are trying to call our office, and we cannot directly answer every call.
- ▶ Never touch a downed power line!

Never touch a person or object that is touching a power line. It could cause serious injury or death. Call 911.

**Please, do not use email or social media (like Facebook) to report an outage or emergency.** ☀



Leave as much information as possible, such as: account name or number, physical address, contact phone number, and details (if known) regarding the outage. We may