

# New Enterprise Rural Electric Cooperative, Inc.

A Touchstone Energy® Cooperative 



One of 14 electric cooperatives serving Pennsylvania and New Jersey

## NEW ENTERPRISE RURAL ELECTRIC COOPERATIVE, INC.

3596 Brumbaugh Road  
New Enterprise, PA 16664-8814  
814-766-3221 • 1-800-270-3177  
FAX: 814-766-3319

Website: [www.newenterpriserec.com](http://www.newenterpriserec.com)

### BOARD OF DIRECTORS

**Leroy D. Walls**  
President  
**Timothy Newman**  
Vice President  
**David Bequeath**  
Secretary  
**Merle Helsel**  
Asst. Secretary  
**Curtis Brant**  
Treasurer  
**Brian McCoy**  
**Mark Swope**

### OFFICE HOURS

Monday through Friday  
7 a.m. - 3:30 p.m.

### EMERGENCY OUTAGE NUMBERS

814-766-3221  
1-800-270-3177

## Building Into 2026



**MARK MORRISON**

**OVER THE PAST EIGHT DECADES**, the board and management of New Enterprise Rural Electric Cooperative (REC) have worked to improve the quality of life within the cooperative service territory. Each of those years were building blocks, steering us to where we are today.

2025 was quite challenging for all of us, and it impacted the way we live and move as free people. News outlets will report that inflation is easing, when in fact, all of us are still feeling the punch of mounting price increases on everything we buy. The cooperative is no different.

Nearly every budget line item, including energy transmission, generation, line construction material, vehicles, hardware, transformers and voltage regulators, has increased 20% to 40% from what it cost in 2020. Despite this adversity, your electric cooperative is in good shape and will continue to provide safe, reliable and competitively priced electric services for its membership.

In the coming year, we will continue to build on our previous successes. Our right-of-way maintenance plan that was implemented years ago has put our system in a great position to handle the adverse weather conditions we experience as our seasons change. While we cannot guarantee our system will always persevere through weather-related events, we will continue to maintain all rights of way to protect the line.

We currently integrate a six-year right-of-way cycle with recorded cooperative outage data to formulate our yearly right-of-way maintenance plan. The maintenance cycle keeps trimming and clearing costs low, and the outage data enables us to focus on the parts of the system that are prone to frequent outages.

Thanks to all our cooperative members who are always on alert for trees that may pose a threat to the line. As always, feel free to give us a call at 814-766-3221 if you have a tree that you think may pose a threat to the line, and we will be more than happy to come out and take a look.

You may have noticed the capital credits applied to member electric bills in December. One of the benefits of cooperative membership is the return of margins. The board is focused on continuing the capital credits program for years to come. To date, we have returned more than \$2 million to our members.

One of the primary focus areas for 2026 will be upgrading poles, conductors and distribution transformers throughout the cooperative service territory, particularly in the Waterside service area. That project will coincide with the completion of the Waterside substation. We have energized a new addition of the substation with an engineered steel structure and a new power transformer that increases voltage and capacity. The upgrades will provide decades of electric load growth and allow the electric distribution system to work more efficiently.

Our current board and management continue to meet the outstanding standard of service and reliability set by those who came before us. We will continue to do our part to maintain the level of service the cooperative has always provided through thoughtful, meaningful, and efficient use of time and resources, which ensures our decisions help make the cooperative better than it was before.

Stop in or give us a call and let us know how we are doing. 

**MARK MORRISON**  
GENERAL MANAGER/CEO

## DOING THE 'ELECTRIC SHIFT'

**WENDY CONLEY,**  
MEMBER SERVICE REPRESENTATIVE

Let's do the "Electric Shift" to keep power costs as low as possible. For those who aren't familiar with the phrase, it's an easy task to perform, and with a little practice, allows you to use electricity more wisely.

During the hot, humid days of summer, electricity use is extremely high, and that use increases the cost of generation to meet consumer needs. New Enterprise Rural Electric Cooperative's future power costs, in fact, are partially based on how much power we buy on hot, sticky weekdays between 1 and 7 p.m.

On weekdays – or series of weekdays, when temperatures rise above 90 degrees with high humidity – "Electric Shift" messages will broadcast on WJAC-TV 6 (Johnstown) throughout the day. A message will also be placed on our website, [newenterpriserec.com](http://newenterpriserec.com), during peak hours.

Below are a few steps you can take to help prevent future power cost increases:

- ▶ Set your air conditioners to 78 degrees or use fans instead of air conditioners.
- ▶ Close your curtains and blinds to keep your home cooler.
- ▶ Operate washers, dryers, dishwashers, showers, and other major appliances early in the morning or late in the evening.
- ▶ Minimize the number of times you must open your refrigerator or freezer.
- ▶ Cook with an outdoor grill or a microwave oven.
- ▶ Turn off non-essential lights.
- ▶ Run pool pumps at night.

If only a few people do the "Electric Shift," it won't make much of a difference, but if we all work together, we can have an impact.

So do your part by doing the "Electric Shift" from 1 to 7 p.m. June 1 to Sept. 30 on hot, humid days. Thank you for making a few changes to help save on future power costs. 🌱

## Right-of-Way Maintenance Increases Safety, Reliability

**ISAAC THREADGILL,** METER & DATA TECHNICIAN

AT NEW ENTERPRISE RURAL ELECTRIC COOPERATIVE (REC), we enjoy the beauty and value that trees provide for our membership. However, when vegetation interferes with our power lines and equipment, it can cause blinks, outages, and pose a major safety concern. This causes problems providing safe and reliable electricity to you, our members.

It is our job to ensure trees, branches, and brush remain a safe distance from power lines and outside of the cooperative right of way. This not only increases safety and reliability, but it also gives our lineworkers easier access to lines and equipment for repair and maintenance.

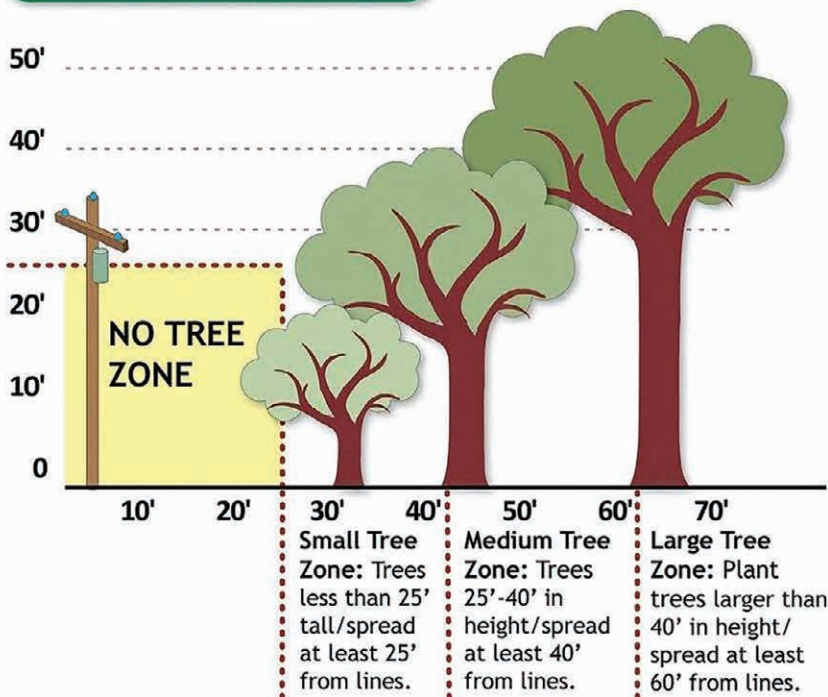
Routinely, cooperative personnel will inspect the system for excess vegetation growth and dying/leaning danger trees. Sometimes, this is done outside of our regular trimming cycle. Our contractors will remove and trim trees according to our right-of-way easement of 20 feet on either side of the pole, from ground to sky.

Therefore, when it comes to planting trees and shrubs, choose areas that will not interfere with the power lines as shown in the illustration below. We recommend not planting anything around our padmount transformer cabinets either. This allows easier and safer access for our lineworkers.

Give us a call or stop by our office if you have any questions about the cooperative's vegetation management program or if you see a tree that may be a hazard to the power lines. We are happy to help.

As always, before you start any landscape project that requires digging, call PA One Call at 811. 🌱

### Tree Planting Guide



# New Option to Pay

**WENDY CONLEY**, MEMBER SERVICE REPRESENTATIVE

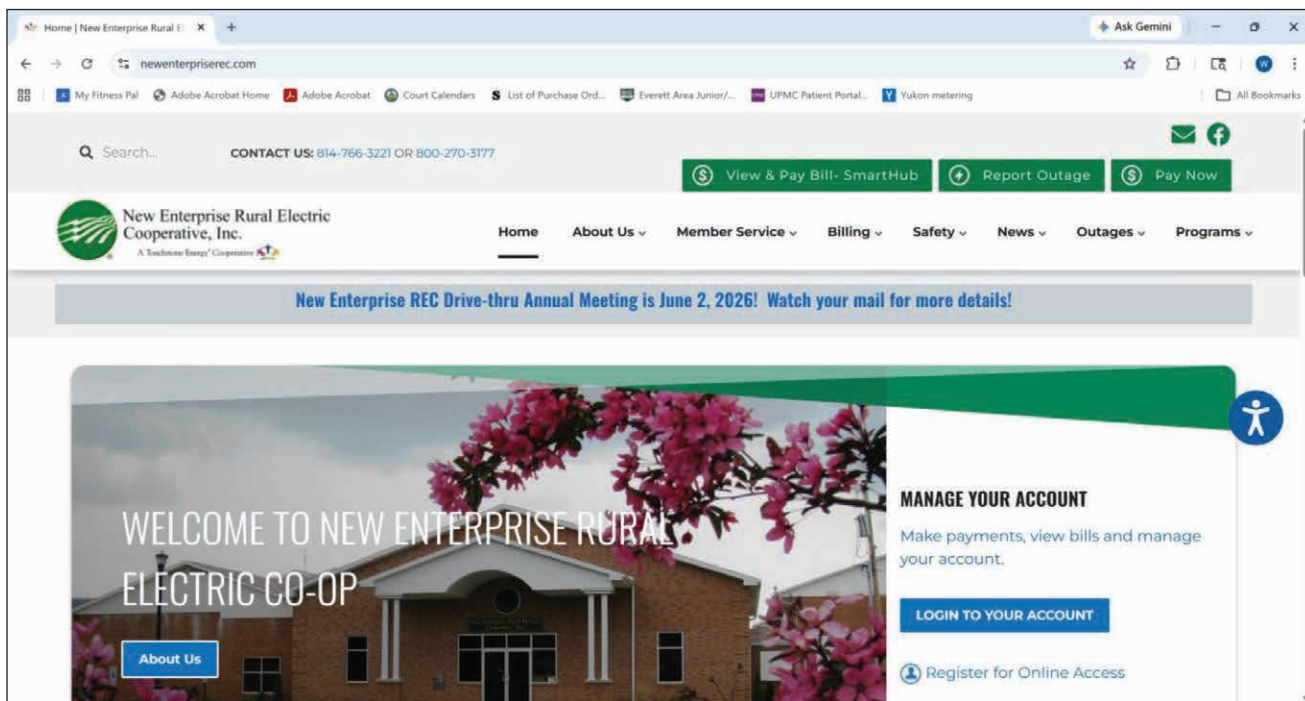
**A FEW MONTHS AGO**, we added a different way to pay your bill through SmartHub on our website, [newenterpriserec.com](http://newenterpriserec.com). It's called Pay Now. This option is used when you need to pay your bill quickly or you can't remember your password.

Enter your account number and your last name or business name to log into your account. To make your payment, you will need to enter your credit/debit card number or checking account information each time you access the service because this method does not allow you to save your payment information.

Pay Now will not allow you to view your bill or look at your use. Click on View & Pay Bill to get more detailed information about your account, sign up for Auto-Pay or make changes to your account.

In addition to Auto Pay, other payment methods are available, too. Those include mailing your payment, paying at the office in person or using our drop-off box. Members may also pay by phone by calling the cooperative at 814-766-3221 during office hours.

Additionally, if you want more information about any of our payment methods, just call the office. ☎



**NEW WAY TO PAY:** Use "Pay Now," see bar at top right, to pay your bill quickly or click "View & Pay Bill" to log into your account and get more detailed information. These features are available on our website, [newenterpriserec.com](http://newenterpriserec.com).



# Grid Power Players

Electricity is available with the flip of a switch, but it travels great distances and is coordinated among multiple entities before it reaches your home or business. Take a look at the grid power players that ensure you receive reliable electricity.



## 1. Generation Owners & Operators

Power plants can be owned and operated by electric utilities, government entities or other private companies. Power plants produce electricity by converting energy from various sources — like natural gas, coal, nuclear, or renewables — into electricity.

## 2. Transmission System Owners & Operators

The transmission grid moves large amounts of electricity over long distances using high-voltage transmission lines attached to large towers. Like power plants, these lines can be owned by a variety of public and private companies.

## 3. Organized Wholesale Markets - PJM Interconnection

In many parts of the country, Regional Transmission Organizations (RTOs) and Independent System Operators (ISOs) coordinate the flow of electricity across regions by balancing supply and demand in real time and managing the dispatch of electric generation and transmission across large areas with the participation of generation and transmission owners.

## 4. Electric Utilities (That's Us - New Enterprise REC!)

Electric distribution utilities take electricity from the transmission system and deliver it to homes and businesses through lower-voltage distribution lines. They also maintain local power lines, poles and other essential equipment.

## 5. End Users (That's You - Our Members!)

End users consist of the homes, businesses and industries that consume electricity. Their demand drives how much electricity is generated and how the grid is managed in real time.

### Other Key Players:

**NERC:** The regulatory authority that develops and enforces mandatory, reliability standards for the North American bulk electric grid. (Standards are developed through a stakeholder process.)

**FERC:** Independent federal agency that oversees interstate transmission and wholesale electricity sales, ensuring fair access to the grid.