

New Enterprise Rural Electric Cooperative, Inc.

A Touchstone Energy® Cooperative 



One of 14 electric cooperatives serving Pennsylvania and New Jersey

NEW ENTERPRISE RURAL ELECTRIC COOPERATIVE, INC.

3596 Brumbaugh Road
New Enterprise, PA 16664-8814
814-766-3221 • 1-800-270-3177
FAX: 814-766-3319
Website: www.newenterpriserec.com

BOARD OF DIRECTORS

Leroy D. Walls
President
Timothy Newman
Vice President
David Bequeath
Secretary
Merle Helsel
Asst. Secretary
Curtis Brant
Treasurer
Brian McCoy
Mark Swope

OFFICE HOURS

Monday through Friday
7 a.m. - 3:30 p.m.

EMERGENCY OUTAGE NUMBERS

814-766-3221
1-800-270-3177

Transmission: electricity's superhighway



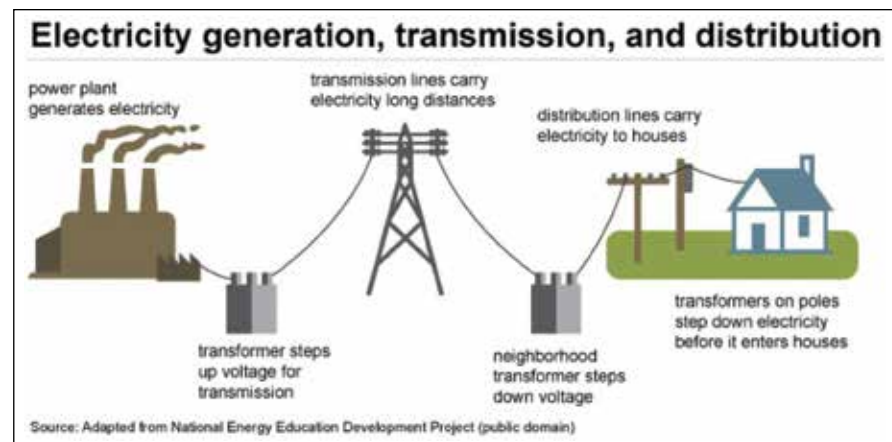
OUR OCTOBER EDITION OF **PENN LINES** outlined the pieces needed to deliver power to our homes, farms and businesses: generation, transmission and distribution. Last month, we covered generation, which is the first step in providing the power we all rely on daily. This month's article will move us to the next step: transmission.

After power is generated, it passes through a transformer, stepping the voltage up to very high levels. From there, the energy is carried over large conductors attached to large towers, which can be up to 200 feet high, or poles, which are often set in an H formation that can be up to 70 feet tall. This network of towers and poles is the backbone of our transmission grid, which delivers voltages ranging between 100,000 to 800,000 volts across the country. The transmission grid is like a superhighway where electricity travels.

If you remember last month's article, units of energy are created, distributed and used in nearly the same moment. A few pieces are necessary to ensure we have the electricity we need when we flip the light switch on. The first is a reliable, dispatchable generation source. Locally, coal, natural gas, and nuclear power generators have provided us with reliable, dispatchable, and cost-effective sources of power for several decades. The second item is a route for the power so it can travel where it is needed. This is a responsibility of regional transmission organizations (RTOs), which are much like traffic officers. Management of electricity generation and transmission is necessary to match power levels to demand. If demand for power in one region exceeds generation, the RTO can communicate this need to other generators and use the interconnected transmission grid to flow power from another region to fill the gap, which highlights the importance of having a dispatchable source of generation.

New Enterprise Rural Electric Cooperative (REC) is a member-owner of Allegheny Electric Cooperative, Inc. (Allegheny) in Harrisburg. Allegheny owns two generators that provide our cooperative with about 65% of the energy used by

Continued on page 16D



Keeping pets and energy bills comfortable

WENDY CONLEY

I DON'T KNOW ABOUT YOU, but I consider my four-legged companion part of the family. When I hear Oscar whining as if he's starving while sitting in front of a half-empty food dish, I can't imagine life without him. I know others feel this way, too. That's why during the winter months, we make sure our *whole* family is cozy — without taking a big “bite” out of our budget.

This month, I'd like to share a few simple ways you can make your home more comfortable this winter, which can ultimately help you save on energy bills.

At the onset of the cold-weather season, we replace the HVAC filter for better air quality and to help the unit operate more efficiently. You can also keep your home cozier by caulking and weatherstripping windows and doors. If your home is particularly chilly, you can tape or affix heavy, clear plastic to the inside of your window frames to create an additional barrier against the cold. Ensure that the plastic is tightly sealed to the frame to help reduce infiltration.

We know winter can be “ruff,” so we set our thermostat at 68 degrees, a “purr-fect” temperature for people and pets. This is especially important for smaller, shorthaired and senior dogs — not just for warmth, but for their general health. Puppies, kittens and older pets with arthritis or other ailments may also have a harder time controlling their body heat and need the additional warmth when it's chilly out.

Pets that sleep close to the floor can be subject to cold drafts that enter your home through windows and exterior doors. If your pet's bed is near a window or door that feels drafty, tightly roll up a towel and place it near the bottom of the door or window to eliminate the draft. Cutting down on cold drafts helps everyone feel more comfortable during colder months.

If possible, elevate your pet's bed so it's not placed directly on a cold floor. An old chair or sofa cushion works well. If you don't use a dog bed, take some old blankets and create a donut shape on the cushion so the dog can snuggle and “nest” within the blanket. You can do the same for cats, but on a smaller scale. Blankets enable pets to nestle into them, even when they aren't tired, and pro-



OSCAR, THE COMFY CAT: You can make your home more comfortable this winter for everyone, including the family pets, without taking a big “bite” out of your budget. Just ask Oscar.

vide a comfortable place for dogs and cats.

During the day, open your blinds and curtains to allow sunlight to warm your home. Close window coverings at night for an added layer of insulation.

At New Enterprise Rural Electric Cooperative, we want to help you save energy and money. Visit our website, newenterpriserec.com, click on “News” and do the Home Energy Adventure for additional energy-saving tips.

We can't control the weather, but we can provide advice to help you save energy and keep your family and furry friends more comfortable during the winter season. 🐾

LIHEAP opens

THE LOW INCOME HOME ENERGY Assistance Program (LIHEAP) opened Nov. 1 and will close April 28, 2023. The program assists families who need help paying their winter heating bills.

To learn if you're eligible, go to the state Department of Human Services website, dhs.pa.gov (choose "Services" and then "Assistance"). You can also request a copy of the brochure at right from New Enterprise Rural Electric Cooperative.

Those eligible can apply online at compass.state.pa.us or submit a paper application through their county assistance office:

Bedford County — 800-542-8584 or 814-623-6127

What is LIHEAP?

The Low-Income Home Energy Assistance Program (LIHEAP) helps low-income families pay their heating bills. LIHEAP is a grant. You do not have to repay it.

To receive help...

- Apply between Nov. 1, 2022 and Apr. 28, 2023.
- You don't have to be on public assistance
- You don't need to have an unpaid heating bill
- You can either rent or own your home

How does LIHEAP work?

LIHEAP offers both cash and crisis grants. Families may apply for:

Cash Grants
Cash grants help families pay their heating bills. The one-time payment is sent directly to your utility company or fuel provider, and it will be credited on your bill. (In some cases, the check may be mailed to you directly.) Cash grants range from \$300-\$1000 and are based on household size, income, and fuel type.

Crisis Grants
Crisis grants may be available if you have an emergency situation and are in jeopardy of losing your heat. You can receive more than one Crisis grant, as necessary, during the season until the maximum benefit of \$1000 is reached.

Crisis situations include:

- Broken heating equipment or leaking lines that must be fixed or replaced
- Lack of fuel
- Termination of utility service
- Danger of being without fuel (less than a 15 day supply) or of having utility service terminated (received a notice that service will be shut off within the next 60 days)

If you have a heating emergency please call your local county assistance office (CAO).

Who is eligible?

You may qualify for a LIHEAP grant if your household income meets the following income guidelines:

INCOME GUIDELINES 2022 - 2023 LIHEAP	
Household Size	Maximum Annual Income
1	\$ 20,385
2	\$ 27,465
3	\$ 34,545
4	\$ 41,625
5	\$ 48,705
6	\$ 55,785
7	\$ 62,865
8	\$ 69,945
9	\$ 77,025
10	\$ 84,105

Each Additional Person
\$ 7,080

After your application is processed, you will receive a written notice that will tell you if you qualify. If eligible, it will tell you the amount of your grant.

How do I apply?

- Apply online at: www.compass.state.pa.us
- Request an application by calling the Statewide LIHEAP Hotline at 1-866-857-7995 or call PA Relay at 711 for the hearing impaired.
- Applications are available at your local CAO

To apply, you will need

- Names of people in your household
- Dates of birth for all household members
- Social Security Numbers for all household members
- Proof of income for all household members
- A recent heating bill

Fulton County — 800-222-8563 or 717-485-3151

Huntingdon County — 800-237-7674 or 814-643-1170


Shop for Christmas early! Gift certificates are available!

NEW ENTERPRISE RURAL ELECTRIC COOPERATIVE (REC) has a gift that isn't hard to find and makes shopping easy: electric gift certificates.

Our gift certificates make a great gift for Christmas or any time during the year. Christmas, however, is the most popular time to buy them.

If you would like to purchase one, please complete the certificate below. If you want more than one, write the additional information on a separate piece of paper. Mail this information with your check for the full amount to: New Enterprise Rural Electric Cooperative, 3596 Brumbaugh Road,

New Enterprise, PA 16664-8814. Gift certificates can also be purchased at newenterpriserec.com or by visiting or calling our office. The cooperative can mail the certificate to the member or to you. Also, please let us know if you would prefer to remain anonymous.



New Enterprise Rural Electric Cooperative, Inc.
A Touchstone Energy® Cooperative

3596 Brumbaugh Rd
New Enterprise PA 16664
(814) 766-3221 or 800-270-3177

Gift Certificate

Especially for _____

From _____

This amount has already been applied to your account: \$ _____

Authorized by _____

FROM THE GENERAL MANAGER/CEO

Continued from page 16A

Pennsylvania electric cooperatives, with the remainder of our generation needs coming from the open market. First Energy transmission lines carry energy to all New Enterprise REC substations, then distribute it over the cooperative system to local homes, farms and businesses. We will discuss distribution in next month's article.

New Enterprise REC has been experiencing the pressure of rising wholesale energy, capacity and material costs over the past 18 months. Transformer costs have increased 50%, and wire and metal construction components have increased 40% to 70%. This, coupled with sharp increases in fuel costs, product availability and extended delivery times, has greatly affected how far our

dollars go to operate the cooperative. It has been 10 years since our last rate adjustment, and we are committed to ensuring rates will remain constant for the remainder of 2022.

At first glance, a rate increase moving into 2023 is almost a certainty. Management is evaluating our system's energy use, current rate classifications, our rate structures, and how changes in the wholesale power markets are impacting our energy costs so we can continue to provide the membership with safe, reliable, and competitively priced power. We will always strive to keep members first and explore all effective options for the good of our cooperative. If I can answer any questions or if you would like to talk with me, give me a call or stop by the office. ☎

MARK MORRISON
GENERAL MANAGER/CEO

